

## LD782-E3

Deep Recessed Low Glare Fixed LED Downlight



Install sheet - Page 1

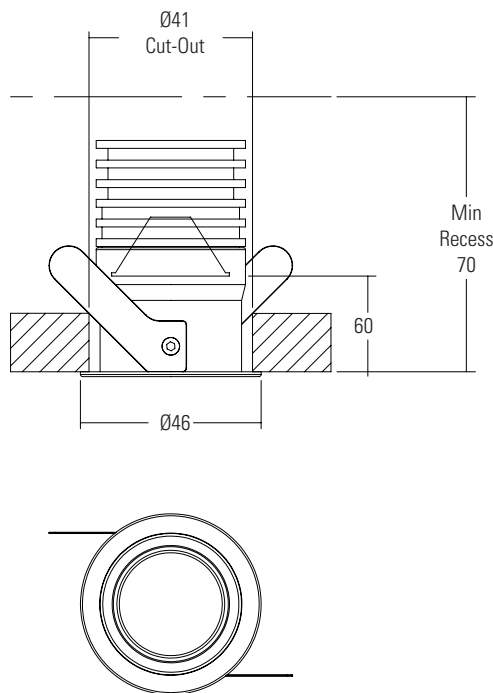
### SPECIFICATION

LED recessed luminaires are class III for Safety Extra Low Voltage **DC** supply. The product should only be used with a supplied or LightGraphix approved **350mA** and **500mA** constant current driver.

**Suitable for mounting on normally flammable surfaces.**

Lamp: **E3 LED Engine**.  
This fitting is **IP65** rated.

LD782- E3	
Product & LED Output Code	Power Output
LD782-E3 - 350	350mA 5W
LD782-E3 - 500	500mA 7W



### INSTALLATION

1. Bore clearance holes to suit dimensions below.
2. Check ceiling void has sufficient space to dissipate heat. See below for more information.
3. Wire the luminaire to a specified driver.  
NOTE: Connections in wet environments. Make IP68 connection to stop water travelling up the cables into the fittings! Refer to IP connection sheet for further details.
4. Orientate the fitting to desired position and squeeze mount springs into body with finger and thumb.
5. Push and rotate the luminaire anticlockwise into the cut-out hole until flush with surface.

### CEILING REQUIREMENTS

Ceiling requirements can vary but the minimum ceiling void volume must be adhered to. The minimum possible ceiling depth is 70mm. The volumes are presented below as L x W x H.



Output current	Minimum ceiling void dimension requirements (Lmm x Wmm x Hmm)	Minimum ceiling void volume	
		cm <sup>3</sup>	Litre(s)
LD782-E3 - 350	120 x 120 x 70	1008cm <sup>3</sup>	1
LD782-E3 - 500	200 x 200 x 70	2800cm <sup>3</sup>	2.8

## SEE CONSTANT CURRENT WIRING SHEET FOR IN SERIES WIRING DIAGRAM

### WIRING

Do not power up until fitting is wired correctly! Constant current LEDs must be wired in series, polarity is critical. Please refer to specified driver sheet for details on the minimum and maximum number of LEDs per circuit.

### IMPORTANT

Make sure that all cables and connections are securely connected before switching on the power. Failing to do this can lead to failure of the LEDs and/or the driver. If the LEDs do not work upon power up, turn off the power source immediately and check the polarity of the wiring. Any attempt made to open up and/or modify the luminaire will invalidate the manufacturers warranty. This is inclusive of but not limited to removal of the LightGraphix product label or removal of any parts from the main body of the product including bezels, electrical components and factory fitted fixing methods (unless otherwise stated in these instructions).

### CORE COLOUR & POLARITY

Colour of Cable	Red	Black
Materials	+	-

### MAINTENANCE

Clean with soft damp cloth.  
LED: Please contact LightGraphix.  
O-ring replacement part: 17.0049.